

What are owners and
local governments
grappling with?

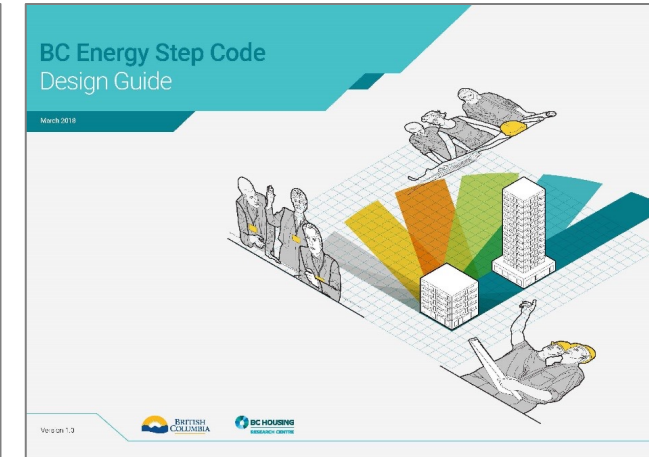
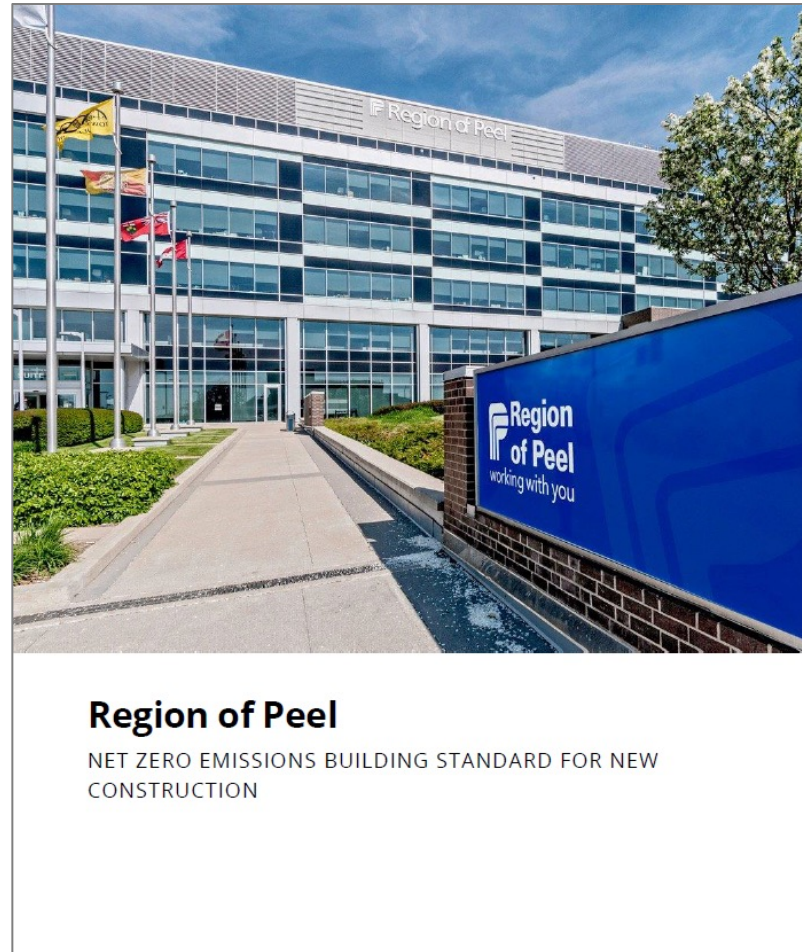


Lisa Westerhoff
Integral Group



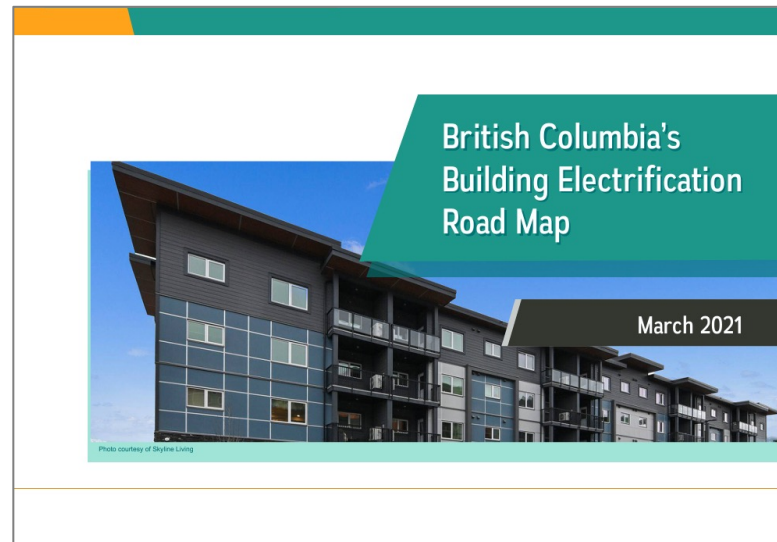
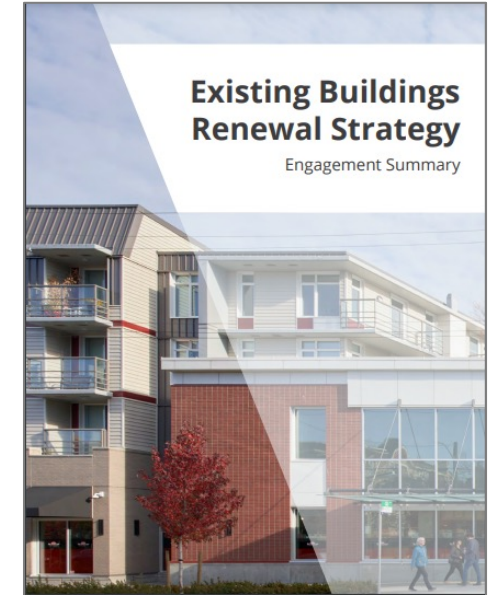
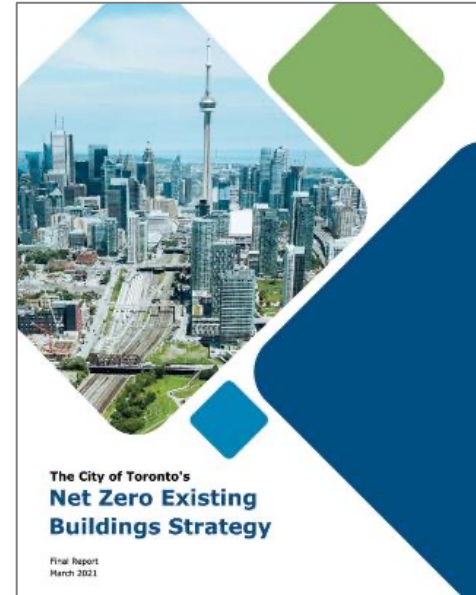
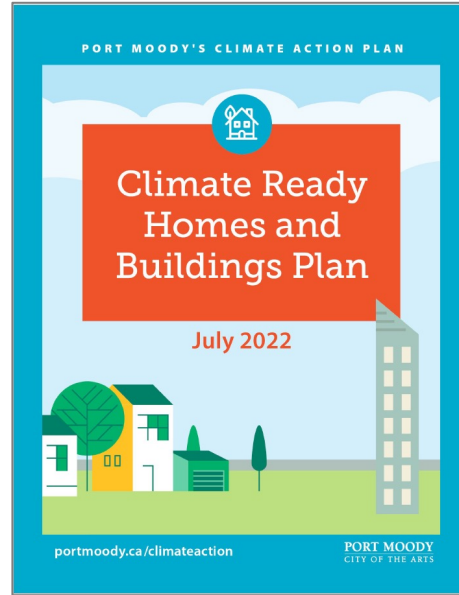
New building standards

- Set corporate building standards
- Explore tools and authorities, e.g.
 - BC Energy Step Code
 - Development Permit Areas
 - Rezoning policies
- Remove roadblocks, e.g.
 - Permit area guidelines
 - Noise bylaws
- Prepare both staff & industry



Transforming existing buildings

- Join intercity or regionally led collaborations, e.g.
 - Retrofit concierge programs
 - Strata energy advisor services
 - Benchmarking & disclosure
- Explore legal options, e.g.
 - Carbon targets
 - Stds & Maintenance bylaws
- Support provincial req's
- Working with key partners (e.g. real estate)



Teasing out some tensions in integrating equity

